

# Varenr. & sortiment



eks.  
på et  
varenr.

| Patrontypen | Størrelsen dia. | Højden     | Filtermediet | filtermedia m2 | Bånd      |
|-------------|-----------------|------------|--------------|----------------|-----------|
| <b>CDD</b>  | <b>351</b>      | <b>711</b> | <b>806</b>   | <b>12.5</b>    | <b>3B</b> |

# DUST DIVISION

- CD...3P**  
Twist lock
- CDD/CDDK/CD/  
CDC/CDCK:**  
DIN cartridge
- CPC:**  
Cell Element
- CS:**  
Dustmaster
- CJ:**  
\* JEt cartridge
- CPB/ CBLPB**  
Pleated bag  
Top/bottomloader
- CRD:**  
Thread (RD)  
Cartridge
- CJ:**  
\* Steck cartridge



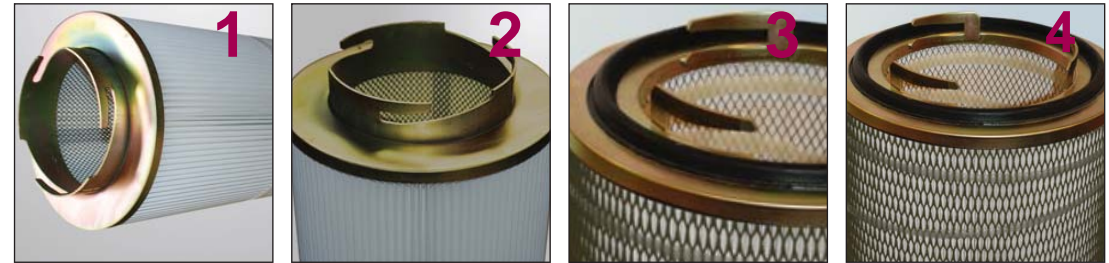
| Filtermedia:         |   |
|----------------------|---|
| NA 137               | Blend media (80% cellulose + 20% polyester)         |
| NA 137 ALU           | Blend media (cellulose with polyester) / Antistatic |
| NA 138 FH            | Blend media (80% cellulose + 20% polyester)         |
| NA 1239              | 100% Cellulose                                      |
| NA 140               | Blend media (80% cellulose + 20% polyester)         |
| NA 170               | 100% Polyester                                      |
| NA 170 ALU           | 100% Polyester + Antistatic                         |
| NA 220               | Micromelt with polyester                            |
| NA 600 Oil mist      | 100% Polyester                                      |
| NA 796               | 100% Cellulose                                      |
| NA 800 PTFE Membran  | 100% Polyester with Teflon membrane                 |
| NA 800 PTFE Membran+ | 100% Polyester / Antistatic with Teflon membrane    |
| NA 806               | 100% Polyester                                      |
| NA 806 ALU           | 100% Polyester / Antistatic                         |
| NA 806 FC            | 100% Polyester / with FC coating                    |
| NA 806 ANFC          | 100% Polyester / Antistatic with FC coating         |
| NA 909               | 100% Polyester                                      |
| NA 909 ALU           | 100% Polyester / Antistatic                         |
| NA 909 FC            | 100% Polyester / with FC coating                    |
| NA 909 ANFC          | 100% Polyester / FC + Antistatic coating            |
| NA 93                | 100% Polypropylehn                                  |

\* JET & Steck cartridge betegnes med det sammen (CJ), men hvis det efterfølgende tal slutter med 7 er det en Steck cartridge



# Twist Lock

En Twist lock patron kendetegnes ved topflangsens "krave". En almindelig Twist lock vises på billederne 1 & 2 mens nummer 3 & 4 viser en "Twist lock USA".



Eksempel på varenr: CD325/1000/140/8 3P

DUST DIVISION

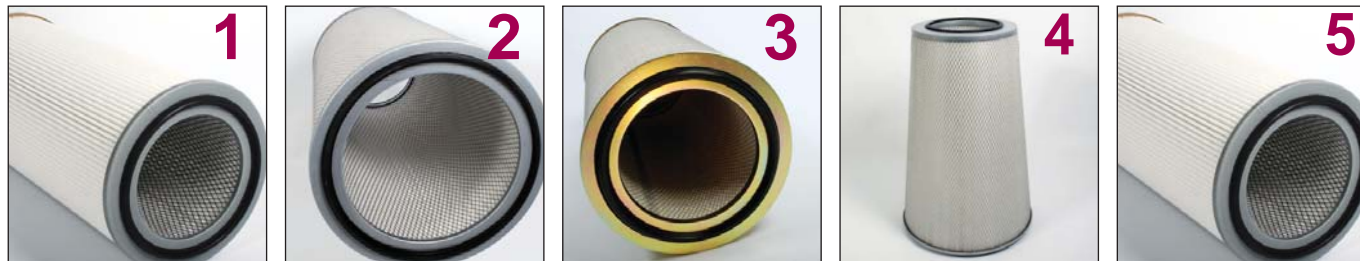
| TYPES:     | Diameter |     |     | Length:    | NA                   | Media   | filtermedia areal/m <sup>2</sup> : |
|------------|----------|-----|-----|------------|----------------------|---|------------------------------------|
|            | TFLH     | OD  | ID  |            |                      |   |                                    |
| Twist lock |          |     |     |            |                      |   |                                    |
| CD 47      | 47       | 325 | 209 | 300-1400mm | NA 137               | Blend media (80% cellulose + 20% polyester)         |                                    |
| CD 52      | 52       | 325 | 209 | 300-1400mm | NA 137 ALU           | Blend media (cellulose with polyester) / Antistatic | 3,84                               |
|            |          |     |     | 300-1400mm | NA 138 FH            | Blend media (80% cellulose + 20% polyester)         |                                    |
|            |          |     |     | 300-1400mm | NA 1239              | 100% Cellulose                                      | 10                                 |
| USA        | 29       | 325 | 209 | 300-1400mm | NA 140               | Blend media (80% cellulose + 20% polyester)         | 8                                  |
|            |          |     |     |            | NA 170               | 100% Polyester                                      | 13                                 |
|            |          |     |     |            | NA 170 ALU           | 100% Polyester + Antistatic                         | 15,6                               |
|            |          |     |     |            | NA 220               | Micromelt with polyester                            | 25,5                               |
|            |          |     |     |            | NA 600 Oil mist      | 100% Polyester                                      |                                    |
|            |          |     |     |            | NA 796               | 100% Cellulose                                      |                                    |
|            |          |     |     |            | NA 800 PTFE Membran  | 100% Polyester with Teflon membrane                 |                                    |
|            |          |     |     |            | NA 800 PTFE Membran+ | 100% Polyester / Antistatic with Teflon membrane    |                                    |
|            |          |     |     |            | NA 806               | 100% Polyester                                      |                                    |
|            |          |     |     |            | NA 806 ALU           | 100% Polyester / Antistatic                         |                                    |
|            |          |     |     |            | NA 806 FC            | 100% Polyester / with FC coating                    |                                    |
|            |          |     |     |            | NA 806 ANFC          | 100% Polyester / Antistatic with FC coating         |                                    |
|            |          |     |     |            | NA 909               | 100% Polyester                                      |                                    |
|            |          |     |     |            | NA 909 ALU           | 100% Polyester / Antistatic                         |                                    |
|            |          |     |     |            | NA 909 FC            | 100% Polyester / with FC coating                    |                                    |
|            |          |     |     |            | NA 909 ANFC          | 100% Polyester / FC + Antistatic coating            |                                    |
|            |          |     |     |            | NA 93                | 100% Polypropylehn                                  |                                    |

OD = outer dia.  
 ID = inner dia.



# DIN Cartridge

DIN patronen er det mest anvendte filter verden over. Der er 3 typer DIN patroner. Open/Open er har en åben flange i begge ender (foto 2) En Open/close ( foto 3) har en lukket flange i bunden (med Ø13 hul). Den koniske sælges ofte sammen med en open/open og sammen udgør de et sæt.



Eksempel på varenr: CDD/325/710/140/10

DUST DIVISION

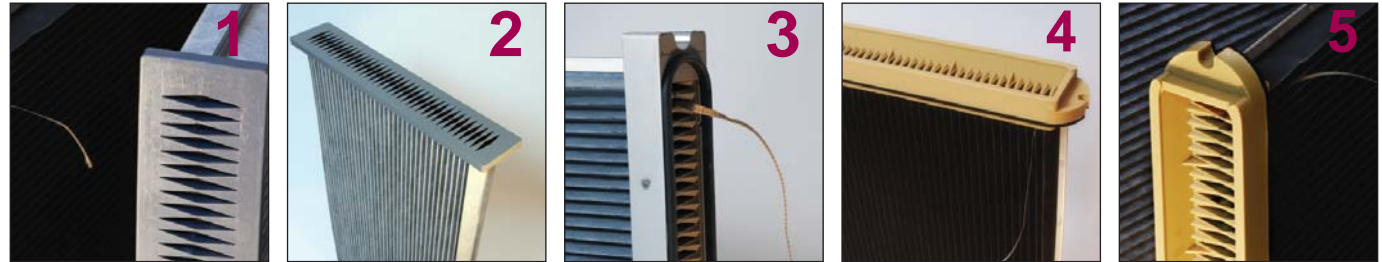
| TYPES:        | Diameter |     | Lenght: | NA          | Media   | filtermedia areal/m <sup>2</sup> :               |                |
|---------------|----------|-----|---------|-------------|---|--|----------------|
|               | OD       | ID  |         |             |   |  |                |
| Open / Open   |          |     |         | NA 137      | Blend media (80% cellulose + 20% polyester)         |  |                |
|               |          |     |         | NA 137 ALU  | Blend media (cellulose with polyester) / Antistatic |  |                |
|               |          |     |         | NA 138 FH   | Blend media (80% cellulose + 20% polyester)         |  |                |
|               | CDD      | 150 | 85/95   | 300-1400mm  | NA 1239   | 100% Cellulose                                   | 3,84           |
|               | CDD      | 225 | 143     | 300-1400mm  | NA 140  | Blend media (80% cellulose + 20% polyester)      | 10             |
| Open / Close: | CDD      | 325 | 215     | 300-1400mm  | NA 170  | 100% Polyester                                   | 12,5           |
|               | CDD      | 351 | 241     | 300-1400mm  | NA 170 ALU  | 100% Polyester + Antistatic                      | 13             |
|               | CD       | 150 | 85/95   | 300-1400mm  | NA 220  | Micromelt with polyester                         | 15,6           |
|               |          | 225 | 143     | 300-1400mm  | NA 600 Oil mist                                     | 100% Polyester                                   | 25,5           |
|               |          | 325 | 215     | 300-1400mm  | NA 796  | 100% Cellulose                                   |                |
|               |          | 351 | 241     | 300-1400mm  | NA 800 PTFE Membran                                 | 100% Polyester with Teflon membrane              |                |
|               | Konisk:  |     |         |             | NA 800 PTFE Membran+                                | 100% Polyester / Antistatic with Teflon membrane |                |
|               |          | CDC | 445     | 335         | 710mm   | NA 806   | 100% Polyester |
| CDC           |          | 570 | 470     | 710mm       | NA 806 ALU  | 100% Polyester / Antistatic                      |                |
|               |          |     |         |             | NA 806 FC   | 100% Polyester / with FC coating                 |                |
|               |          |     |         |             | NA 806 ANFC   | 100% Polyester / Antistatic with FC coating      |                |
|               |          |     |         |             | NA 909  | 100% Polyester                                   |                |
|               |          |     |         |             | NA 909 ALU  | 100% Polyester / Antistatic                      |                |
|               |          |     |         |             | NA 909 FC   | 100% Polyester / with FC coating                 |                |
|               |          |     |         | NA 909 ANFC | 100% Polyester / FC + Antistatic coating            |  |                |
|               |          |     |         | NA 93       | 100% Polypropylehn                                  |  |                |

OD = outer dia.  
 ID = inner dia.



# CELL Cartridge

Fladfilterne er blevet utrolig populære at anvende, i det filterne giver mulighed for at skabe små kompakte anlæg. Fladfilterne er delt op i type 1 & 2. De fladfiltere som monteres med en bolt (har et indhak i top-flangen) er type 2 (se foto: 3, 4 & 5)

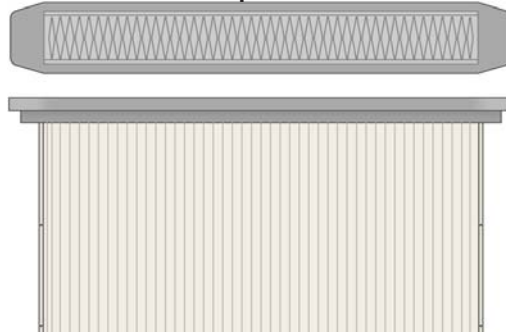


Eksempel på varenr: CPC/498/1000/170/12.5

DUST DIVISION

| TYPES:             | Dimension wide | Dimension length |                      | filtermedia areal/m <sup>2</sup> :                  |
|--------------------|----------------|------------------|----------------------|---|
| <b>CELL type 1</b> |                |                  | NA 137               | Blend media (80% cellulose + 20% polyester)         |
| CPC                | 485            | 850,1115         | NA 137 ALU           | Blend media (cellulose with polyester) / Antistatic |
| CPC                | 498            | 1000,1200        | NA 138 FH            | Blend media (80% cellulose + 20% polyester)         |
| CPC                | 515            | 1000,1200        | NA 1239              | 100% Cellulose                                      |
| CPC                | 520/500        | 1000,1200        | NA 140               | Blend media (80% cellulose + 20% polyester)         |
| CPC                | 630            | 1200             | NA 170               | 100% Polyester                                      |
| <b>CELL type 2</b> |                |                  | NA 170 ALU           | 100% Polyester + Antistatic                         |
| CPC                | 420            | 920,1000         | NA 220               | Micromelt with polyester                            |
| CPC                | 635            | 1200+1250        | NA 600 Oil mist      | 100% Polyester                                      |
| CPC                | 1050           | 1555             | NA 796               | 100% Cellulose                                      |
|                    |                |                  | NA 800 PTFE Membran  | 100% Polyester with Teflon membrane                 |
|                    |                |                  | NA 800 PTFE Membran+ | 100% Polyester / Antistatic with Teflon membrane    |
|                    |                |                  | NA 806               | 100% Polyester                                      |
|                    |                |                  | NA 806 ALU           | 100% Polyester / Antistatic                         |
|                    |                |                  | NA 806 FC            | 100% Polyester / with FC coating                    |
|                    |                |                  | NA 806 ANFC          | 100% Polyester / Antistatic with FC coating         |
|                    |                |                  | NA 909               | 100% Polyester                                      |
|                    |                |                  | NA 909 ALU           | 100% Polyester / Antistatic                         |
|                    |                |                  | NA 909 FC            | 100% Polyester / with FC coating                    |
|                    |                |                  | NA 909 ANFC          | 100% Polyester / FC + Antistatic coating            |
|                    |                |                  | NA 93                | 100% Polypropylehn                                  |

målene er af det plisserede materiale

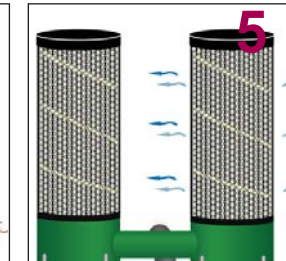
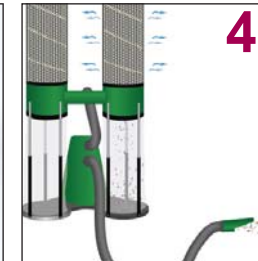






# Dustmaster

Dustmaster en en patrontype der anvendes i mobile anlæg.



Eksempel på varenr: CS/320/710/170alu/13

DUST DIVISION

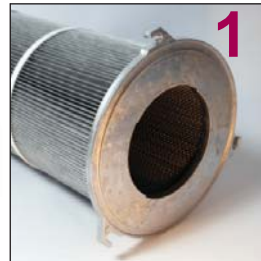
| TYPES:     | Diameter OD | Lenght:    |                      | filtermedia areal/m <sup>2</sup> :                  |
|------------|-------------|------------|----------------------|---|
| Dustmaster |             |            | NA 137               | Blend media (80% cellulose + 20% polyester)         |
|            |             |            | NA 137 ALU           | Blend media (cellulose with polyester) / Antistatic |
|            |             |            | NA 138 FH            | Blend media (80% cellulose + 20% polyester)         |
| CS         | 210         | 500-1000mm | NA 1239              | 100% Cellulose                                      |
| CS         | 230         | 500-1000mm | NA 140               | Blend media (80% cellulose + 20% polyester)         |
| CS         | 320         | 500-1000mm | NA 170               | 100% Polyester                                      |
| CS         | 320A        | 500-1000mm | NA 170 ALU           | 100% Polyester + Antistatic                         |
| CS         | 400         | 500-1000mm | NA 220               | Micromelt with polyester                            |
| CS         | 478         | 500-1000mm | NA 600 Oil mist      | 100% Polyester                                      |
| CS         | 495         | 500-1000mm | NA 796               | 100% Cellulose                                      |
| CS         | 520         | 500-1000mm | NA 800 PTFE Membran  | 100% Polyester with Teflon membrane                 |
| CS         | 600         | 500-1000mm | NA 800 PTFE Membran+ | 100% Polyester / Antistatic with Teflon membrane    |
|            |             |            | NA 806               | 100% Polyester                                      |
|            |             |            | NA 806 ALU           | 100% Polyester / Antistatic                         |
|            |             |            | NA 806 FC            | 100% Polyester / with FC coating                    |
|            |             |            | NA 806 ANFC          | 100% Polyester / Antistatic with FC coating         |
|            |             |            | NA 909               | 100% Polyester                                      |
|            |             |            | NA 909 ALU           | 100% Polyester / Antistatic                         |
|            |             |            | NA 909 FC            | 100% Polyester / with FC coating                    |
|            |             |            | NA 909 ANFC          | 100% Polyester / FC + Antistatic coating            |
|            |             |            | NA 93                | 100% Polypropylehn                                  |

A = open/open  
 OD = outer dia.



# JET Cartridge

JETpatronen kendes ved montageøjjerne på topflangerne. JET patronerne kan fås med 3 & 4 montageøjer (se fotos). JET patronen kan fås som en miljø patron hvor flangerne samt det indre net er i plast.



Eksempel på varenr: CJ/325/710/170alu/13

DUST DIVISION

| TYPES:             | Diameter OD | Lenght:    | NA                   | Blend media (80% cellulose + 20% polyester)         | filtermedia areal/m <sup>2</sup> : |
|--------------------|-------------|------------|----------------------|---|------------------------------------|
| <b>3 LUG metal</b> |             |            | NA 137               | Blend media (80% cellulose + 20% polyester)         |                                    |
|                    |             |            | NA 137 ALU           | Blend media (cellulose with polyester) / Antistatic |                                    |
|                    |             |            | NA 138 FH            | Blend media (80% cellulose + 20% polyester)         |                                    |
|                    | CJ          | 300-2000mm | NA 1239              | 100% Cellulose                                      | 3,84                               |
|                    | CJ          | 300-2000mm | NA 140               | Blend media (80% cellulose + 20% polyester)         | 10                                 |
|                    | CJ          | 300-2000mm | NA 170               | 100% Polyester                                      | 12,5                               |
| <b>3 LUG plast</b> |             |            | NA 170 ALU           | 100% Polyester + Antistatic                         | 13                                 |
|                    | CJK         | 300-2000mm | NA 220               | Micromelt with polyester                            | 15,6                               |
|                    | CJK         | 300-2000mm | NA 600 Oil mist      | 100% Polyester                                      | 25,5                               |
| <b>4 LUG metal</b> |             |            | NA 796               | 100% Cellulose                                      |                                    |
|                    | CJ          | 300-2000mm | NA 800 PTFE Membran  | 100% Polyester with Teflon membrane                 |                                    |
| <b>4 LUG plast</b> |             |            | NA 800 PTFE Membran+ | 100% Polyester / Antistatic with Teflon membrane    |                                    |
|                    | CJK         | 300-2000mm | NA 806               | 100% Polyester                                      |                                    |
|                    |             |            | NA 806 ALU           | 100% Polyester / Antistatic                         |                                    |
|                    |             |            | NA 806 FC            | 100% Polyester / with FC coating                    |                                    |
|                    |             |            | NA 806 ANFC          | 100% Polyester / Antistatic with FC coating         |                                    |
|                    |             |            | NA 909               | 100% Polyester                                      |                                    |
|                    |             |            | NA 909 ALU           | 100% Polyester / Antistatic                         |                                    |
|                    |             |            | NA 909 FC            | 100% Polyester / with FC coating                    |                                    |
|                    |             |            | NA 909 ANFC          | 100% Polyester / FC + Antistatic coating            |                                    |
|                    |             |            | NA 93                | 100% Polypropylehn                                  |                                    |

OD = outer dia.

FL4 & FL5 monteres nedera



# Pleated Bag

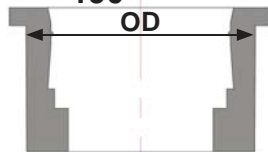
Pleated bag kan fås med topflanger (foto 1&2) eller bundflanger (foto 4). Flangerne er af en plast støbemasse og gør patronen miljøvenlig ved forbrænding/eller bortskaffelse. Ved bestilling af en pleated bag patron er hul størrelsen det vigtigste.



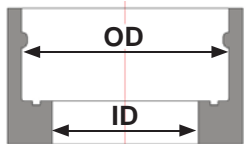
Eksempel på varenr: CPB/154/1000/220/15,6/WL

DUST DIVISION

| TYPES:               | Dim<br>hul nr. OD | Lenght:    | NA                   | Media   | filtermedia<br>areal/m <sup>2</sup> : | Band:<br>Weldtech<br>or<br>Glue |
|----------------------|-------------------|------------|----------------------|---|---------------------------------------|---------------------------------|
| <b>Top loader</b>    |                   |            | NA 137               | Blend media (80% cellulose + 20% polyester)         |                                       |                                 |
|                      |                   |            | NA 137 ALU           | Blend media (cellulose with polyester) / Antistatic |                                       |                                 |
|                      |                   |            | NA 138 FH            | Blend media (80% cellulose + 20% polyester)         |                                       |                                 |
| CPB                  | 120               | 300-2000mm | NA 1239              | 100% Cellulose                                      | 3,84                                  |                                 |
| CPB                  | 130-135 130 130   | 300-2000mm | NA 140               | Blend media (80% cellulose + 20% polyester)         | 10                                    | Afhænger af                     |
| CPB                  | 150 145 141       | 300-2000mm | NA 170               | 100% Polyester                                      | 12,5                                  | antal folder                    |
| CPB                  | 154-157 154 152   | 300-2000mm | NA 170 ALU           | 100% Polyester + Antistatic                         | 13                                    | i patronen                      |
| CPB                  | 160 160 159       | 300-2000mm | NA 220               | Micromelt with polyester                            | 15,6                                  | I varenr.                       |
|                      | 190               | 300-2000mm | NA 600 Oil mist      | 100% Polyester                                      | 25,5                                  | skrives                         |
|                      |                   |            | NA 796               | 100% Cellulose                                      |                                       | det som                         |
| <b>bottom loader</b> |                   |            | NA 800 PTFE Membran  | 100% Polyester with Teflon membrane                 |                                       | W & WL                          |
|                      |                   |            | NA 800 PTFE Membran+ | 100% Polyester / Antistatic with Teflon membrane    |                                       |                                 |
| CBLPB                | 106 105           | 300-2000mm | NA 806               | 100% Polyester                                      |                                       |                                 |
| CBLPB                | 124 103           | 300-2000mm | NA 806 ALU           | 100% Polyester / Antistatic                         |                                       |                                 |
| CBLPB                | 130 130           | 300-2000mm | NA 806 FC            | 100% Polyester / with FC coating                    |                                       |                                 |
| CBLPB                | 160 160           | 300-2000mm | NA 806 ANFC          | 100% Polyester / Antistatic with FC coating         |                                       |                                 |
|                      |                   |            | NA 909               | 100% Polyester                                      |                                       |                                 |
|                      |                   |            | NA 909 ALU           | 100% Polyester / Antistatic                         |                                       |                                 |
|                      |                   |            | NA 909 FC            | 100% Polyester / with FC coating                    |                                       |                                 |
|                      |                   |            | NA 909 ANFC          | 100% Polyester / FC + Antistatic coating            |                                       |                                 |
|                      |                   |            | NA 93                | 100% Polypropylehn                                  |                                       |                                 |



| ID nr. | OD  |
|--------|-----|
| 106    | 105 |
| 124    | 103 |
| 130    | 130 |
| 160    | 160 |



OD = outer dia.  
ID = inner dia.



# Gevind Cartridge (RD)

RD patronen kendes ved sin specielle top og bund flange. Topflangen består af et hun-gevind der drejes op i anlæggets montagestænger. RD filternes bund er støbt med en møtrik lignende form der gør, man kan sikre sig, at patronen er spændt ordentligt fast.



Eksempel på varenr: CRD/161/710/170alu/13

DUST DIVISION

| TYPES: | Diameter |    | Length:    | Media                | filtermedia areal/m <sup>2</sup> :                  |
|--------|----------|----|------------|----------------------|---|
|        | OD       | ID |            |                      |   |
| RD     |          |    |            | NA 137               | Blend media (80% cellulose + 20% polyester)         |
|        | CRD 60   | 54 | 200-2000mm | NA 137 ALU           | Blend media (cellulose with polyester) / Antistatic |
|        | CRD 72   | 68 | 200-2000mm | NA 138 FH            | Blend media (80% cellulose + 20% polyester)         |
|        | CRD 161  | 90 | 200-2000mm | NA 1239              | 100% Cellulose                                      |
|        | CRD 209  | 90 | 200-2000mm | NA 140               | Blend media (80% cellulose + 20% polyester)         |
|        |          |    |            | NA 170               | 100% Polyester                                      |
|        |          |    |            | NA 170 ALU           | 100% Polyester + Antistatic                         |
|        |          |    |            | NA 220               | Micromelt with polyester                            |
|        |          |    |            | NA 600 Oil mist      | 100% Polyester                                      |
|        |          |    |            | NA 796               | 100% Cellulose                                      |
|        |          |    |            | NA 800 PTFE Membran  | 100% Polyester with Teflon membrane                 |
|        |          |    |            | NA 800 PTFE Membran+ | 100% Polyester / Antistatic with Teflon membrane    |
|        |          |    |            | NA 806               | 100% Polyester                                      |
|        |          |    |            | NA 806 ALU           | 100% Polyester / Antistatic                         |
|        |          |    |            | NA 806 FC            | 100% Polyester / with FC coating                    |
|        |          |    |            | NA 806 ANFC          | 100% Polyester / Antistatic with FC coating         |
|        |          |    |            | NA 909               | 100% Polyester                                      |
|        |          |    |            | NA 909 ALU           | 100% Polyester / Antistatic                         |
|        |          |    |            | NA 909 FC            | 100% Polyester / with FC coating                    |
|        |          |    |            | NA 909 ANFC          | 100% Polyester / FC + Antistatic coating            |
|        |          |    |            | NA 93                | 100% Polypropylehn                                  |

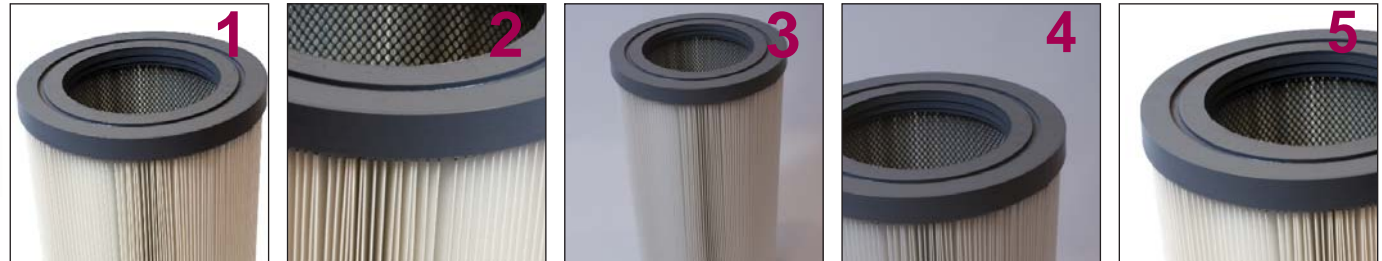
OD = outer dia.  
 ID = inner dia.





# STECK Cartridge

Steck cartridge eller steck aufnahme, som den hedder på tysk, kendes på dens specialkonstrueret gummie top flange. Top flangen trykkes op over et metalrør der har en bukket kant og virker som modhagere.



Eksempel på varenr: CJ/157/710/170alu/13

DUST DIVISION

| TYPES: | Diameter OD | Lenght:    |                      | filtermedia areal/m <sup>2</sup> :                  |
|--------|-------------|------------|----------------------|---|
| Steck  |             |            | NA 137               | Blend media (80% cellulose + 20% polyester)         |
|        |             |            | NA 137 ALU           | Blend media (cellulose with polyester) / Antistatic |
|        |             |            | NA 138 FH            | Blend media (80% cellulose + 20% polyester)         |
| CJ     | 127         | 200-2000mm | NA 1239              | 100% Cellulose                                      |
| CJ     | 137         | 200-2000mm | NA 140               | Blend media (80% cellulose + 20% polyester)         |
| CJ     | 157         | 200-2000mm | NA 170               | 100% Polyester                                      |
| CJ     | 227         | 200-2000mm | NA 170 ALU           | 100% Polyester + Antistatic                         |
|        | 327         | 200-2000mm | NA 220               | Micromelt with polyester                            |
|        |             |            | NA 600 Oil mist      | 100% Polyester                                      |
|        |             |            | NA 796               | 100% Cellulose                                      |
|        |             |            | NA 800 PTFE Membran  | 100% Polyester with Teflon membrane                 |
|        |             |            | NA 800 PTFE Membran+ | 100% Polyester / Antistatic with Teflon membrane    |
|        |             |            | NA 806               | 100% Polyester                                      |
|        |             |            | NA 806 ALU           | 100% Polyester / Antistatic                         |
|        |             |            | NA 806 FC            | 100% Polyester / with FC coating                    |
|        |             |            | NA 806 ANFC          | 100% Polyester / Antistatic with FC coating         |
|        |             |            | NA 909               | 100% Polyester                                      |
|        |             |            | NA 909 ALU           | 100% Polyester / Antistatic                         |
|        |             |            | NA 909 FC            | 100% Polyester / with FC coating                    |
|        |             |            | NA 909 ANFC          | 100% Polyester / FC + Antistatic coating            |
|        |             |            | NA 93                | 100% Polypropylehn                                  |

OD = outer dia.



# Filtermedia

Filter materialet er elementet der giver filterpatronerne deres unikke egenskaber. Filter materialet bestemmer om det er evner at filtrere olietåger eller betonstøv.

| Low-medium temperature |        |             |               |                      |
|------------------------|--------|-------------|---------------|----------------------|
| Fiber Generic name     | Cotton | Polyamid    | Polypropelene | Polyester            |
| Fiber Trade name       | - - -  | Nylon 66    | Herculon      | Dacron®              |
| High temperature       |        |             |               |                      |
| Fiber Generic name     | Aramid | Glass       | PTFE          | Polyethylene Sulfide |
| Fiber Trade name       | Nomex® | Fiberglass® | Teflon®       | Rylon®               |

DUST DIVISION

## Media

Polyester

## Use/Characteristic:

Commonly used material in the industry

Singed polyester

Improves dust cake release

PTFE membrane polyester

Captures fine particles where artificial dust cake is needed

Aramid

Suitable for high temperature applications

Polypropelene

Known for superior chemical resistance

## Media used in Cartridge filters

Cellulose

Commonly used cartridge media material.

Cellulose/polyester

Has high durability and good abrasion resistance

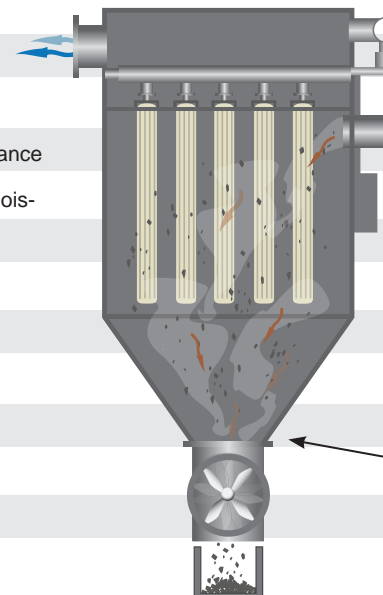
Spun bonded polyester

Has good dust cake release and excellent moisture tolerance and abrasion resistance

## Media used in Pleated bag filters

Spun bonded polyester

Commonly used pleated bag media



The two main functions of media filters in major types of industrial dust collectors are:

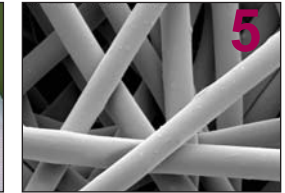
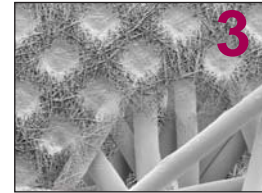
- 1) to stop dust particles on its surface while allowing clean air molecules to pass through and
- 2) to provide easy release of the dust cake during cleaning.

Media filter cleaning is normally done by a burst of clean air in the reverse direction to the air stream with a velocity greater than air stream. The greater force of the cleaning air burst dislodges (vibration) the dust cake from the filter media and drops it into the hopper area (the funnel and the dust collecting area (\* støvopsamlings tragten/tønden). For greater efficiency, a fan is used to push or pull air through filter media openings.



# Filtermedia

Filter materialet er elementet der giver filterpatronerne deres unikke egenskaber. Filter materialet bestemmer om det er evner at filtrere olietåger eller betonstøv.



DUST DIVISION

| Filtermedia:         |   | Weight<br>g/m <sup>2</sup> | Temperatur celsius<br>air:<br>dry      moiature |    | Tykkelse i<br>mm | airpermeability 200Pa. | Klasse      |
|----------------------|---|----------------------------|---|----|------------------|------------------------|-------------|
|                      |   |                            |   |    |                  |                        |             |
| NA 137               | Blend media (80% cellulose + 20% polyester)         | 130                        | 80  | 65 | 0,32             | 560 m3 m2/h            | M           |
| NA 137 ALU           | Blend media (cellulose with polyester) / Antistatic | 130                        | 80  | 65 | 0,32             | 560 m3 m2/h            | M           |
| NA 138 FH            | Blend media (80% cellulose + 20% polyester)         | 170                        | 60  | 60 | 0,32             | 520 m3 m2/h            | M           |
| NA 1239              | 100% Cellulose                                      | 120                        | -   | -  | 0,33             | -                      | L           |
| NA 140               | Blend media (80% cellulose + 20% polyester)         | 131                        | -   | -  | 0,31             | -                      | -           |
| NA 170               | 100% Polyester                                      | 170                        | 110   | 90 | 0,50             | 890 m3 m2/h            | M           |
| NA 170 ALU           | 100% Polyester + Antistatic                         | 170                        | 110   | 90 | 0,50             | 855 m3 m2/h            | M           |
| NA 220               | Micromelt with polyester                            | 220                        | 150   | 95 | 2,1              | 940 m3 m2/h            | M           |
| NA 600 Oil mist      | 100% Polyester                                      | 300                        | -   | -  | 3,5-4,5          | 100-1500 l (m2xs)      | ikke testet |
| NA 796               | 100% Cellulose                                      | 180                        | 150   | 95 | 2,1              | 1020 m3 m2/h           | L           |
| NA 800 PTFE Membran  | 100% Polyester with Teflon membrane                 | 250                        | 120   | 90 | 0,6              | 190 m3 m2/h            | M           |
| NA 800 PTFE Membran+ | 100% Polyester / Antistatic with Teflon membrane    | 300                        | 120   | 90 | 0,6              | 127 m3 m2/h            | M           |
| NA 806               | 100% Polyester                                      | 260                        | 120   | 90 | 0,6              | 530 m3 m2/h            | M           |
| NA 806 ALU           | 100% Polyester / Antistatic                         | 260                        | 120   | 90 | 0,6              | 490 m3 m2/h            | M           |
| NA 806 FC            | 100% Polyester / with FC coating                    | 260                        | 120   | 90 | 0,6              | 470 m3 m2/h            | M           |
| NA 806 ANFC          | 100% Polyester / Antistatic with FC coating         | 260                        | 120   | 90 | 0,6              | 480 m3 m2/h            | M           |
| NA 909               | 100% Polyester                                      | 240                        | 140   | 90 | 0,55             | 490 m3 m2/h            | M           |
| NA 909 ALU           | 100% Polyester / Antistatic                         | 250                        | 140   | 90 | -                | 484 m3 m2/h            | M           |
| NA 909 FC            | 100% Polyester / with FC coating                    | 250                        | -   | -  | -                | 485 m3 m2/h            | M           |
| NA 909 ANFC          | 100% Polyester / FC + Antistatic coating            | 250                        | 140   | 90 | -                | 482 m3 m2/h            | M           |
| NA 93                | 100% Polypropylehn                                  | 200                        | -   | -  | 0,75             | 1080 m3 m2/h           | M           |